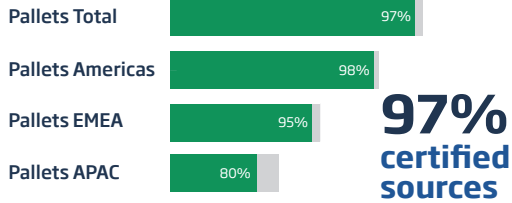


MATERIALS

Volume of **certified wood** for the Year



ZERO wood waste to landfill target

92% of production volumes at **75%** of sites in FY15

EMISSIONS

20% We met our 2010 target of **20% reduction** in scope 1 and scope 2 emissions

Plastic reused by IFCO:
17,465 tonnes



SAFETY

Brambles Injury Frequency Rate

BIFR 13.3 : **15%** improvement

Brambles

2015 Sustainability Report Card

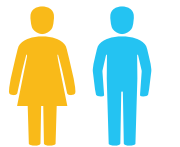
CHEP IFCO



LEARNING AND DEVELOPMENT

1.8 training days per employee

Community contributions for FY15



1,400 employees volunteered more than **12,500 hours**



Volunteer hour value US \$290,000

Financial contributions US \$680,000

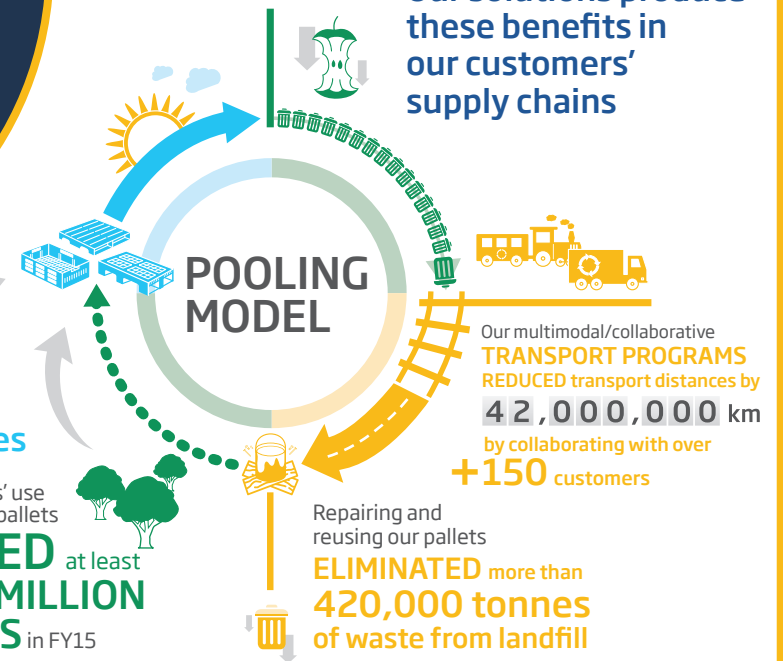
In-kind contributions US \$1,450,000

Total donations US \$2,420,000



CHEP and IFCO collaborate with over **100 food banks** around the world.

Our solutions produce these benefits in our customers' supply chains



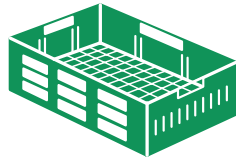
Better Planet

Materials

In FY11, Brambles set a target of achieving chain of custody certification for 100% of wood purchased for manufacture and repair of CHEP pallets by FY15. In FY15, Brambles purchased 2.3 million cubic metres of wood for use in CHEP pooled pallets, up from 1.6 million cubic metres in FY11. Of the wood purchased in FY15, **97% was from certified sources with 43% carrying chain of custody certification.**



100% of plastic material is recovered from IFCO RPCs at end of life.



This reduces our demand for virgin plastic and means that none of our RPC plastic ends up in landfill. In FY15, IFCO reused more than 17,000 tonnes of plastic material in the manufacture of new RPCs.

Better Communities

CHEP is performing an in-depth study of the global supply chain network for the United Nations High Commissioner for Refugees (UNHCR).

Vicente Escribano, Head of UNHCR's Supply Management Logistic Service, said: "The efficiency of our supply chain is often literally a matter of life and death to the refugees and families we serve, so any improvements we can make could have a massive impact.

"We approached CHEP as a global supply chain leader to ask if they would evaluate if and how improvements could be made to improve our logistics and associated costs. Working with CHEP is a great opportunity for UNHCR and CHEP providing its resources and expertise on a voluntary basis is a real bonus."

The UNHCR leads and co-ordinates activities worldwide to protect, and seek durable solutions for refugees, providing protection and assistance to more than 46 million refugees, returnees, internally displaced and stateless people.



Better Business

Safety

In March 2015, Brambles conducted our first global Safety Week, encouraging employees to work towards Zero Harm globally.

Safety Week included clear messages on safety, as well as competitions, a driving manual, posters, videos, events and activities to promote Zero Harm around the world.

During the week, teams around the world organised workshops and events for employees around safety and healthy living.

Our top safety risks



Pedestrian and vehicle segregation



Driving on open roads



Third party operations




Machinery guarding

Supply chain collaboration

In FY15, we reduced transportation distances around the world by over 42 million kilometres. This is the equivalent of more than 35,000 tonnes CO2 emissions.

In the US, fleet optimisation helps customers increase productivity, earn revenue and reduce empty miles by hauling CHEP's backhaul freight. In FY15, CHEP USA's customers were able to generate US\$6.1 million in incremental revenue and eliminate an estimated 9.5 million kilometres in journeys, saving over 10,000 tonnes of CO2-e. Collaborative network optimisation produced additional savings: 6.2 million kilometres in journeys, saving over 6,800 tonnes of CO2-e

In Europe, our transport collaboration, Total Pallet Management and multimodal programs reduced transport distances by over 23 million kilometres in FY15, saving over 14 kt CO2-e. We are now partnering with 135 of our European customers on these programs.

REDUCED transport distances by
42,000,000 km
by collaborating with over
+150 customers
reducing 35,000 tonnes 

Brambles

2015
Sustainability
Report Card

CHEP
IFCO